



AMBERSTONE
PROPERTIES

SCIENTIFICALLY
CRAFTED LIVING

Crafting Homes with **Purpose**

At Amberstone Properties, we believe in creating homes that reflect the pinnacle of quality, guided by a deep commitment to integrity and excellence. Every home is an intricate tapestry, woven with the threads of integrity, precision, and care.

Homes are where stories unfold and memories take root. We design spaces that are thoughtfully crafted to offer comfort, security, and a sense of belonging, making every home a place where life can thrive.



AMBERSTONE
PROPERTIES

The Amberstone Logo

A Symbol with Meaning

The Amberstone logo is more than just a symbol, it is a reflection of everything we stand for. Each element represents the core essence of our brand.

Home



The foundation of life. Represents comfort, security, and a sense of belonging.

Diamond



Built on a framework of rigorous standards. Resilience to deliver the highest quality projects.

Heart



Unwavering commitment to our customers. A promise to always put customers' needs first.

3 Towers



The three identical towers stand as symbols of strength, transparency, and vision.

Pinnacle



Pinnacle of quality & integrity. Holding everything together at the highest point.

The Logo



Scientifically Crafted Living

At Amberstone Properties, we strive to elevate the standards of modern living. Our approach is rooted in ancient principles, such as Vastu Shastra, which have guided the construction of harmonious living spaces for centuries.

By combining these timeless traditions with modern scientific reasoning, we ensure that every home is perfectly aligned with the natural world, providing a balance of light, space, and energy that nurtures well-being and prosperity.

This is the foundation of our commitment to scientifically crafted living, where each home is thoughtfully designed to offer both innovation and balance.



Integrity:

A cornerstone of our craft, ensuring transparency and trust in every detail.



Precision:

Every line, every curve is measured with care, so your home stands the test of time.



Care:

At the heart of our philosophy is the deep commitment to our customers and the desire to build spaces where life can flourish.



Innovation:

Melding ancient wisdom with contemporary design, we shape homes that are both timeless and forward-thinking.

Sarjapur: Bengaluru's Thriving Growth Corridor

Sarjapur is a land where the future unfolds, connecting you to the heartbeat of Bengaluru. Once a serene suburb, it is now a thriving community where the pulse of the city meets the peace of open spaces.

Prime Connectivity:

Seamlessly linked to Bengaluru's IT hubs, offering a life of ease and opportunity.

Leisure and Entertainment:

A community rich in culture, food, and entertainment, providing endless opportunities to unwind.

Educational Institutions:

Some of the finest schools and universities are just a stone's throw away.

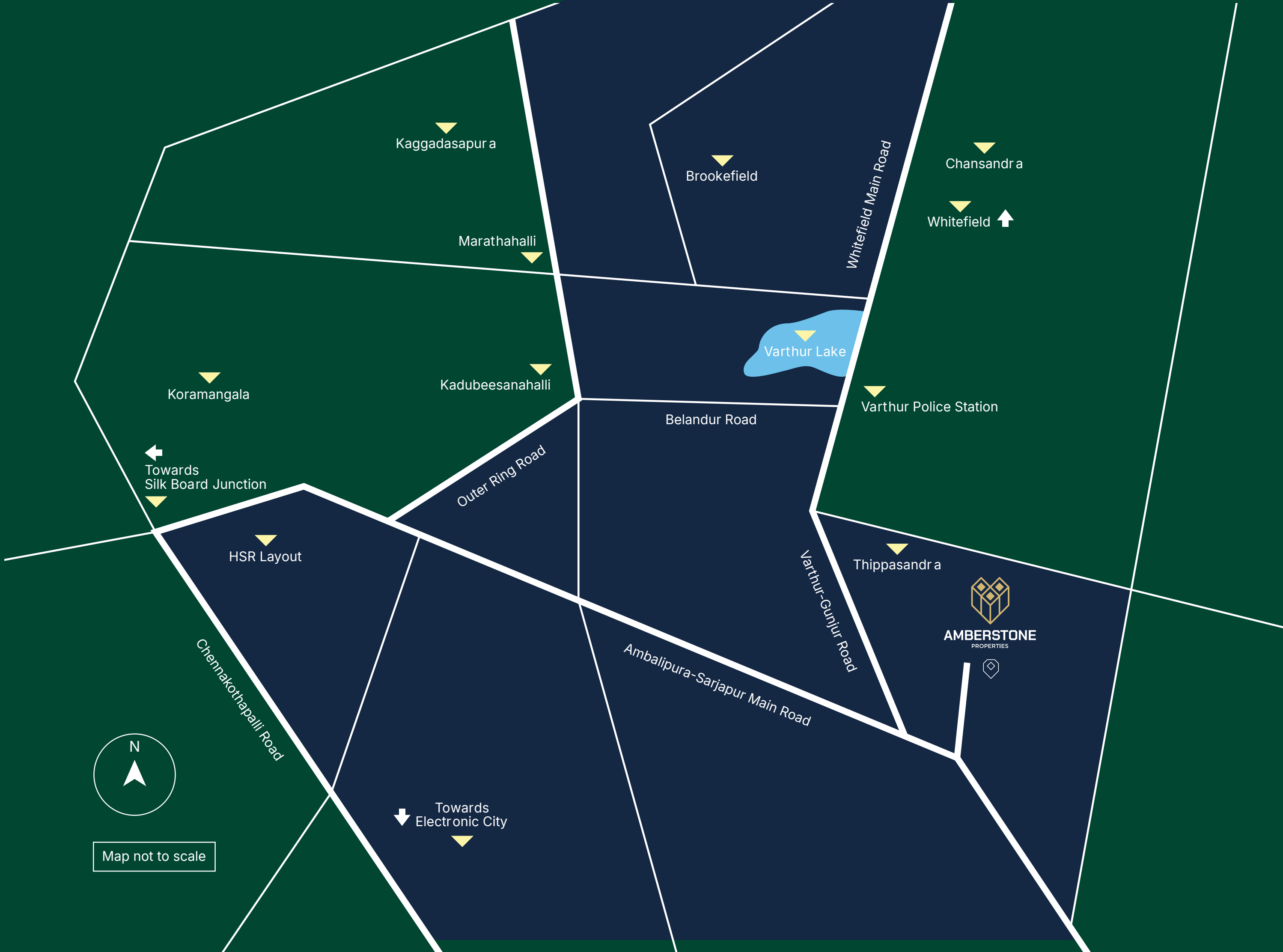
Green Spaces:

Nature weaves through this urban canvas, providing pockets of serenity amidst the hustle.

Healthcare and Wellness:

A sanctuary of health and well-being, with top-tier hospitals nearby.





Kaggadasapura

Brookefield

Chansandra

Whitefield

Marathahalli

Whitefield Main Road

Varthur Lake

Varthur Police Station

Belandur Road

Outer Ring Road

Koramangala

Kadubeesanahalli

Towards
Silk Board Junction

HSR Layout

Thippasandra



Ambalipura-Sarjapur Main Road

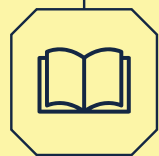
Varthur-Gunjur Road

Chennakothapalli Road

Towards
Electronic City



Map not to scale



Schools

- Greenwood High International School - 5.5km
- One World International School - 4.5km
- The International School Bangalore - 4.3km
- Oakridge International - 3.9km
- National Pubilc School Varthur - 3.5km



Hospitals

- Motherhood Hospital Whitefield - 21km
- Brookefield Hospital - 16km
- Natus Women & Children Hospital, Sarjapur Road - 10.2km
- Belanus Champion Hospital, Sarjapur Road - 9km
- Sri Lakshmi Multi Speciality Hospital, Chambenahalli - 3.8km
- Swastik Hospital, Sarjapur Road - 3.7km



Corporates

- Bagmane Constellation Park - 20km
- RMZ Ecospace - 17km
- Global Technology Park - 17km
- Prestige Tech Park - 17km
- Embassy Tech Village - 15km
- Wipro Corporate Office - 13km
- RGA Tech Park - 9.8km



Malls

- Upcoming Forum Mall - 2.8km
- Brookfield Mall - 15km
- Soul Space Spirit Centro Mall - 15km
- Nexus Whitefield - 13km
- Virginia Mall - 13km
- Forum Neighbourhood Mall - 13km

Welcome to **#SpiritOfSarjapur**

A place where dreams take flight, and the essence of a vibrant life comes alive. **#SpiritOfSarjapur** invites you to experience a world where energy meets harmony, and every step feels like home.



A Reflection of **Growth and Vibrancy**

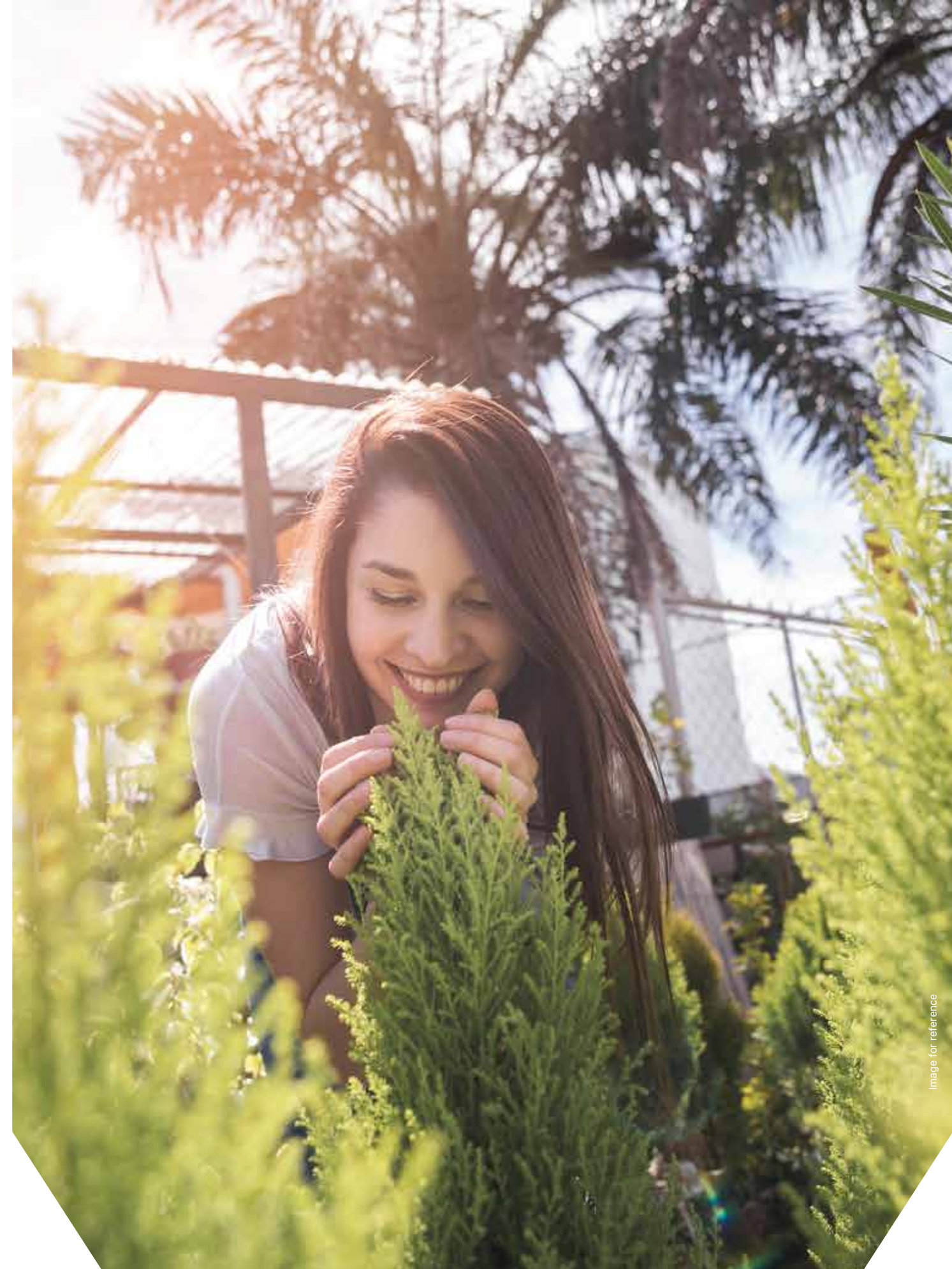
More than just a project, **#SpiritOfSarjapur** captures the energy of a community in motion - alive, growing, and full of promise. At Amberstone Properties, we've embraced this spirit, shaping homes that reflect the dynamism and harmony of this unique neighbourhood. Here, the rhythm of city life meets the calm of green retreats. A lifestyle designed to where every home is a testament to balance and tranquillity.

Where vibrant energy meets a **sense of belonging.**

Rooted in the art of crafting with purpose, Amberstone Properties is here to elevate the way we live in Sarjapur. A community pulsing with life, where every home is a sanctuary designed to inspire.

We're not just building homes; we're shaping a lifestyle-a place where modernity dances with nature, and every detail is a reflection of thoughtful living.

Here, innovation, growth, and serenity come together to create a future where you can truly thrive.



Welcome to a **New Beginning.**

Here, life flows effortlessly, and the spirit of living thrives in every corner.

A New Beginning Awaits

At Amberstone Properties, we believe in creating homes that are more than just places to live—they are spaces where life flows, where moments unfold naturally, and where a sense of belonging is felt in every room.

This project in Sarjapur reflects our commitment to balance, comfort, and innovation. It is a place where your family will not just live, but thrive in perfect harmony with the world around them.

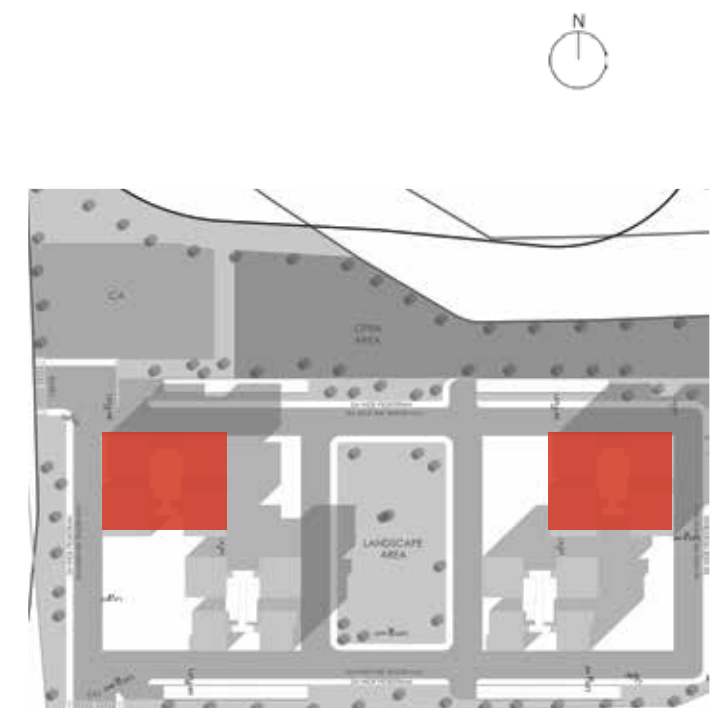




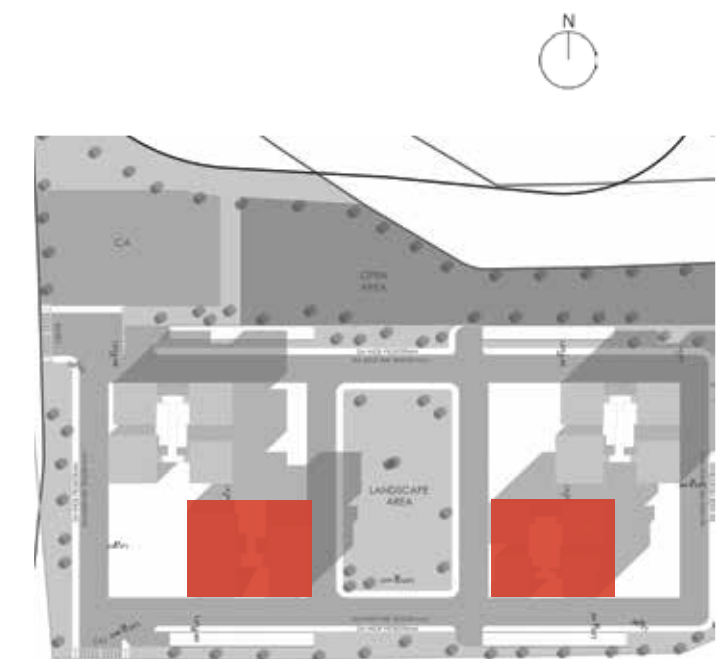
MASTER PLAN



A & D BLOCK FLOOR PLAN



KEY PLAN



KEY PLAN

B & C BLOCK FLOOR PLAN



| FLAT NO. | FACING | TYPE | BUILT UP AREA | CARPET AREA | BALCONY AREA | WALL AREA | SBUA |
|----------|--------|--------------|---------------|-------------|--------------|-----------|------|
| A1 & D1 | WEST | 3.5 BHK + 3T | 1574 | 1347 | 143 | 85 | 2094 |



KEY PLAN

A1 & D1 BLOCK FLOOR PLAN



| FLAT NO. | FACING | TYPE | BUILT UP AREA | CARPET AREA | BALCONY AREA | WALL AREA | SBUA |
|----------|--------|--------------|---------------|-------------|--------------|-----------|------|
| A2 & D2 | WEST | 3.5 BHK + 3T | 1571 | 1344 | 145 | 83 | 2090 |



A2 & D2 UNIT PLAN



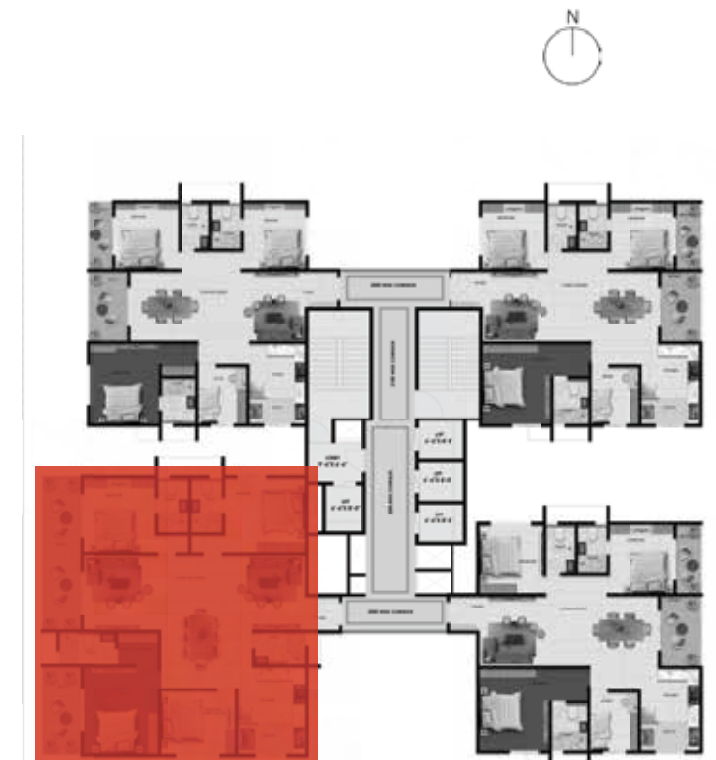
KEY PLAN



| FLAT NO. | FACING | TYPE | BUILT UP AREA | CARPET AREA | BALCONY AREA | WALL AREA | SBUA |
|----------|--------|------------|---------------|-------------|--------------|-----------|------|
| A3 & D3 | EAST | 4 BHK + 4T | 2013 | 1652 | 271 | 89 | 2677 |



A3 & D3 UNIT PLAN



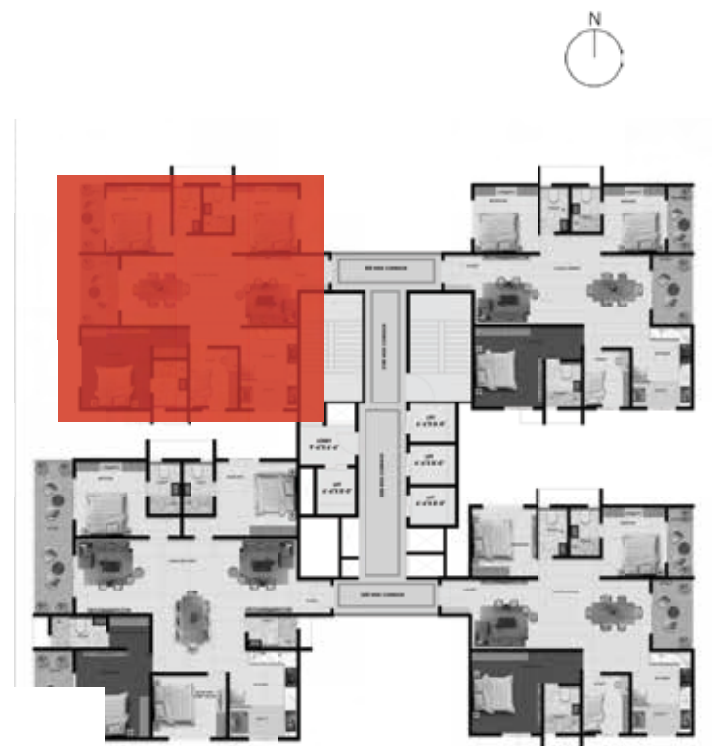
KEY PLAN



| FLAT NO. | FACING | TYPE | BUILT UP AREA | CARPET AREA | BALCONY AREA | WALL AREA | SBUA |
|----------|--------|--------------|---------------|-------------|--------------|-----------|------|
| A4 & D4 | EAST | 3.5 BHK + 3T | 1574 | 1347 | 143 | 85 | 2094 |



A4 & D4 UNIT PLAN



KEY PLAN



| FLAT NO. | FACING | TYPE | BUILT UP AREA | CARPET AREA | BALCONY AREA | WALL AREA | SBUA |
|----------|--------|--------------|---------------|-------------|--------------|-----------|------|
| B1 & C1 | WEST | 3.5 BHK + 3T | 1461 | 1207 | 172 | 82 | 1943 |



B1 & C1 UNIT PLAN



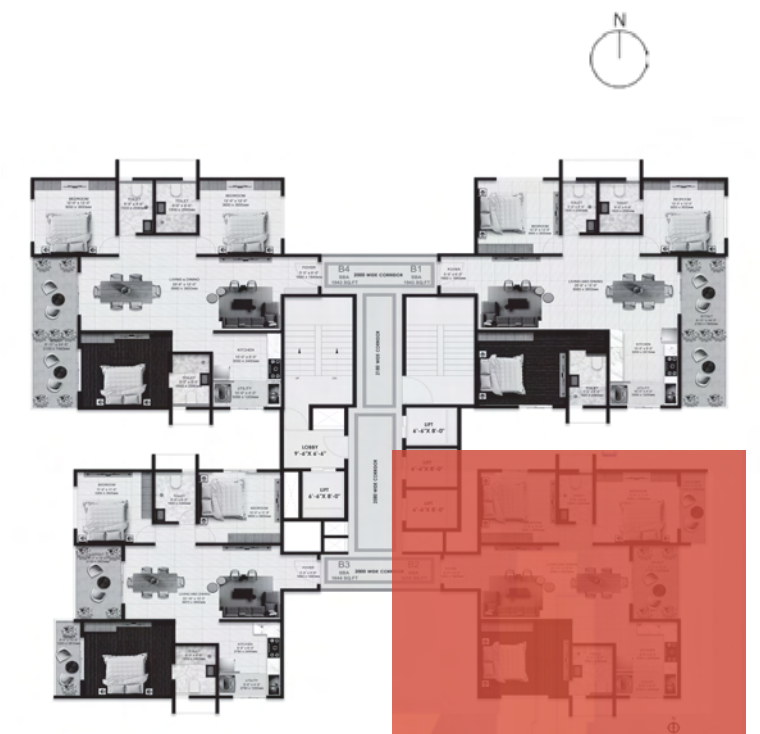
KEY PLAN



| FLAT NO. | FACING | TYPE | BUILT UP AREA | CARPET AREA | BALCONY AREA | WALL AREA | SBUA |
|----------|--------|--------------|---------------|-------------|--------------|-----------|------|
| B2 & C2 | WEST | 3.5 BHK + 2T | 1211 | 996 | 138 | 77 | 1610 |



B2 & C2 UNIT PLAN

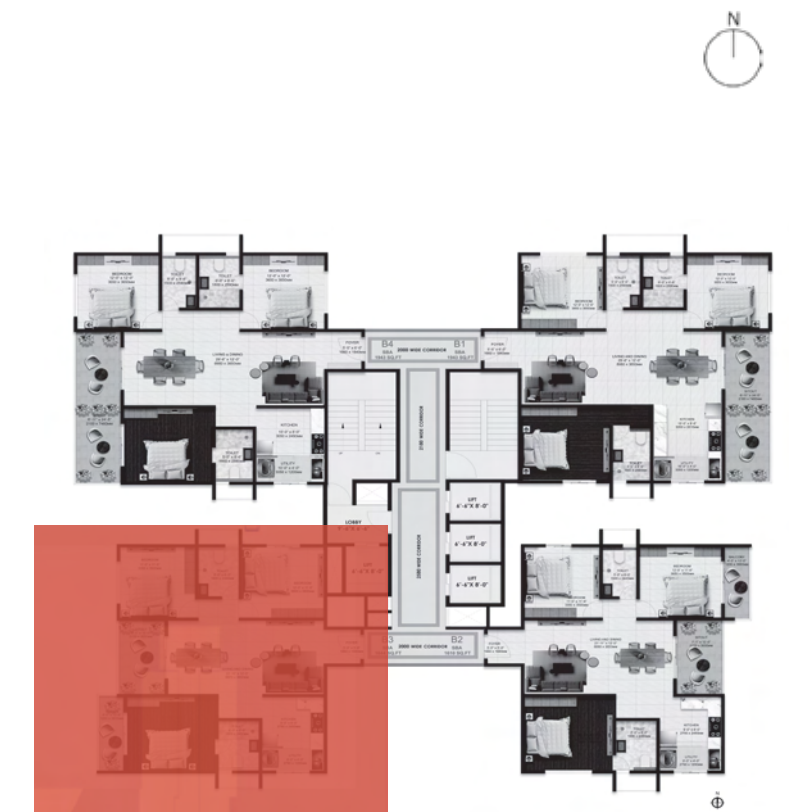


KEY PLAN



| FLAT NO. | FACING | TYPE | BUILT UP AREA | CARPET AREA | BALCONY AREA | WALL AREA | SBUA |
|----------|--------|--------------|---------------|-------------|--------------|-----------|------|
| B3 & C3 | EAST | 3.5 BHK + 2T | 1236 | 1020 | 140 | 77 | 1644 |

B3 & C3 UNIT PLAN



KEY PLAN



| FLAT NO. | FACING | TYPE | BUILT UP AREA | CARPET AREA | BALCONY AREA | WALL AREA | SBUA |
|----------|--------|--------------|---------------|-------------|--------------|-----------|------|
| B4 & C4 | EAST | 3.5 BHK + 3T | 1461 | 1207 | 176 | 78 | 1943 |



B4 & C4 UNIT PLAN



KEY PLAN



A & B EXTENDED TERRACE BLOCK FLOOR PLAN



MASTER PLAN



MASTER PLAN



| FLAT NO. | FACING | TYPE | BUILT UP AREA | CARPET AREA | BALCONY AREA | TERRACE AREA | WALL AREA | SBUA |
|----------|--------|--------------|---------------|-------------|--------------|--------------|-----------|------|
| C4 | EAST | 3.5 BHK + 3T | 1461 | 1207 | 176 | 317 | 78 | 2102 |



C4 EXTENDED TERRACE FLOOR PLAN



| FLAT NO. | FACING | TYPE | BUILT UP AREA | CARPET AREA | BALCONY AREA | TERRACE AREA | WALL AREA | SBUA |
|----------|--------|------------|---------------|-------------|--------------|--------------|-----------|------|
| C1 | WEST | 3 BHK + 3T | 1461 | 1207 | 172 | 190 | 82 | 2038 |



C1 EXTENDED TERRACE FLOOR PLAN



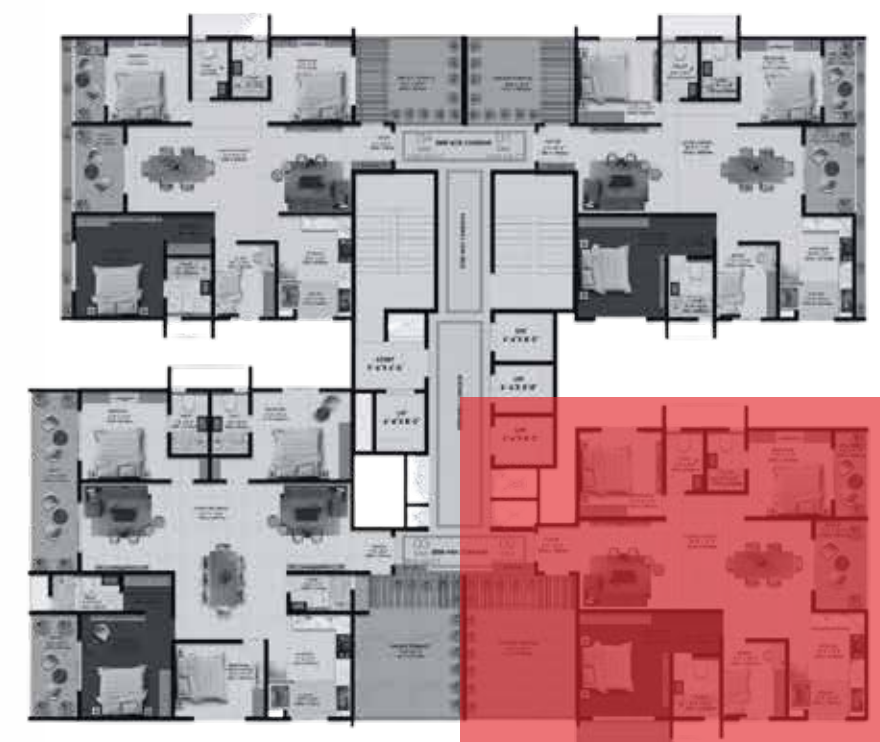
| FLAT NO. | FACING | TYPE | BUILT UP AREA | CARPET AREA | BALCONY AREA | TERRACE AREA | WALL AREA | SBUA |
|----------|--------|------------|---------------|-------------|--------------|--------------|-----------|------|
| D3 | WEST | 4 BHK + 4T | 2013 | 1652 | 271 | 299 | 89 | 2826 |



D3 EXTENDED TERRACE FLOOR PLAN



| FLAT NO. | FACING | TYPE | BUILT UP AREA | CARPET AREA | BALCONY AREA | TERRACE AREA | WALL AREA | SBUA |
|----------|--------|--------------|---------------|-------------|--------------|--------------|-----------|------|
| D2 | WEST | 3.5 BHK + 3T | 1571 | 1344 | 143 | 429 | 85 | 2305 |



D2 EXTENDED TERRACE FLOOR PLAN



| FLAT NO. | FACING | TYPE | BUILT UP AREA | CARPET AREA | BALCONY AREA | TERRACE AREA | WALL AREA | SBUA |
|----------|--------|--------------|---------------|-------------|--------------|--------------|-----------|------|
| A4 & D4 | EAST | 3.5 BHK + 3T | 1574 | 1347 | 143 | 182 | 85 | 2185 |



A4 & D4 EXTENDED TERRACE FLOOR PLAN



| FLAT NO. | FACING | TYPE | BUILT UP AREA | CARPET AREA | BALCONY AREA | TERRACE AREA | WALL AREA | SBUA |
|----------|--------|--------------|---------------|-------------|--------------|--------------|-----------|------|
| A1 & D1 | WEST | 3.5 BHK + 3T | 1574 | 1347 | 143 | 182 | 85 | 2185 |



A1 & D1 EXTENDED TERRACE FLOOR PLAN



| FLAT NO. | FACING | TYPE | BUILT UP AREA | CARPET AREA | BALCONY AREA | TERRACE AREA | WALL AREA | SBUA |
|----------|--------|------------|---------------|-------------|--------------|--------------|-----------|------|
| B2 & C2 | WEST | 3 BHK + 2T | 1211 | 996 | 131 | 265 | 84 | 1742 |



B2 & C2 EXTENDED TERRACE FLOOR PLAN



| FLAT NO. | FACING | TYPE | BUILT UP AREA | CARPET AREA | BALCONY AREA | TERRACE AREA | WALL AREA | SBUA |
|----------|--------|------------|---------------|-------------|--------------|--------------|-----------|------|
| B3 & C3 | EAST | 3 BHK + 2T | 1236 | 1020 | 140 | 268 | 77 | 1777 |



B3 & C3 EXTENDED TERRACE FLOOR PLAN



| FLAT NO. | FACING | TYPE | BUILT UP AREA | CARPET AREA | BALCONY AREA | TERRACE AREA | WALL AREA | SBUA |
|----------|--------|------------|---------------|-------------|--------------|--------------|-----------|------|
| A3 | EAST | 4 BHK + 4T | 2013 | 1652 | 271 | 426 | 89 | 2890 |



A3 EXTENDED TERRACE FLOOR PLAN



| FLAT NO. | FACING | TYPE | BUILT UP AREA | CARPET AREA | BALCONY AREA | TERRACE AREA | WALL AREA | SBUA |
|----------|--------|--------------|---------------|-------------|--------------|--------------|-----------|------|
| A2 | WEST | 3.5 BHK + 3T | 1571 | 1344 | 143 | 299 | 85 | 2240 |



A2 EXTENDED TERRACE FLOOR PLAN



| FLAT NO. | FACING | TYPE | BUILT UP AREA | CARPET AREA | BALCONY AREA | TERRACE AREA | WALL AREA | SBUA |
|----------|--------|------------|---------------|-------------|--------------|--------------|-----------|------|
| B4 | EAST | 3 BHK + 3T | 1461 | 1207 | 176 | 190 | 78 | 2038 |



B4 EXTENDED TERRACE FLOOR PLAN



| FLAT NO. | FACING | TYPE | BUILT UP AREA | CARPET AREA | BALCONY AREA | TERRACE AREA | WALL AREA | SBUA |
|----------|--------|------------|---------------|-------------|--------------|--------------|-----------|------|
| B1 | WEST | 3 BHK + 3T | 1461 | 1207 | 172 | 319 | 82 | 2102 |



B1 EXTENDED TERRACE FLOOR PLAN



Image for reference

VIEWS

ವೆಂತ್ಕಾರ ರೆಸಿಡೆನ್ಸಿಲ್

Club house


AMBERSTONE
PROPERTIES





Image for reference

VIEWS

Our Trusted Partners

Master Planner

FWD Architects

Landscape Designer

Dhruva Landscape Architects

Structural Consultants

Quadometry Engineering

MEP Consultants

Design Hub Consultants

Project Management

Creative Square

Digital Experience Partner

Clove IT

Strategic Partner

Anarock

Brand, Communication &
Design Consultants

Rawseed



AMBERSTONE

PROPERTIES

SCIENTIFICALLY CRAFTED LIVING

Disclaimer Clause: The content of this brochure is for general information purposes only. While enough care is taken by Amberstone Properties to ensure that information on the brochure is up to date, accurate and correct, readers are requested to make their independent inquiry before relying upon the same. In no event will Amberstone Properties offer any warranty on the information made available or be liable for any loss or damage including without limitation, indirect or consequential loss or damage in connection with, the use of information in this brochure. By using or accessing the brochure, you agree with the Disclaimer without any qualification or limitation. Design, specifications, floor plans, brochures, interactive plans etc., are subject to change without prior notice. Computer-generated images, walkthroughs and rendered images are the artist's impression and are indicative of the actual designs. Concept images used are for representation purposes only. The contents of this brochure are meant to provide information to the readers of this brochure about ourselves including our various projects. They are only for general information and are subject to change. By no stretch of the imagination, the information on the brochure shall be construed as an advertisement and/or invitation or offer for sale. To find out more about projects/developments, please visit our sales office during working hours and get in touch with an authorized Amberstone Properties sales representative. Please note that by sharing any of your contact details on the brochure, you are authorizing the Sales Response team of Amberstone Properties (even if you are registered on the DND Registry) to provide information on our projects over Calls, SMS & Emails.

Strategic Partner

ANAROCK
RESIDENTIAL